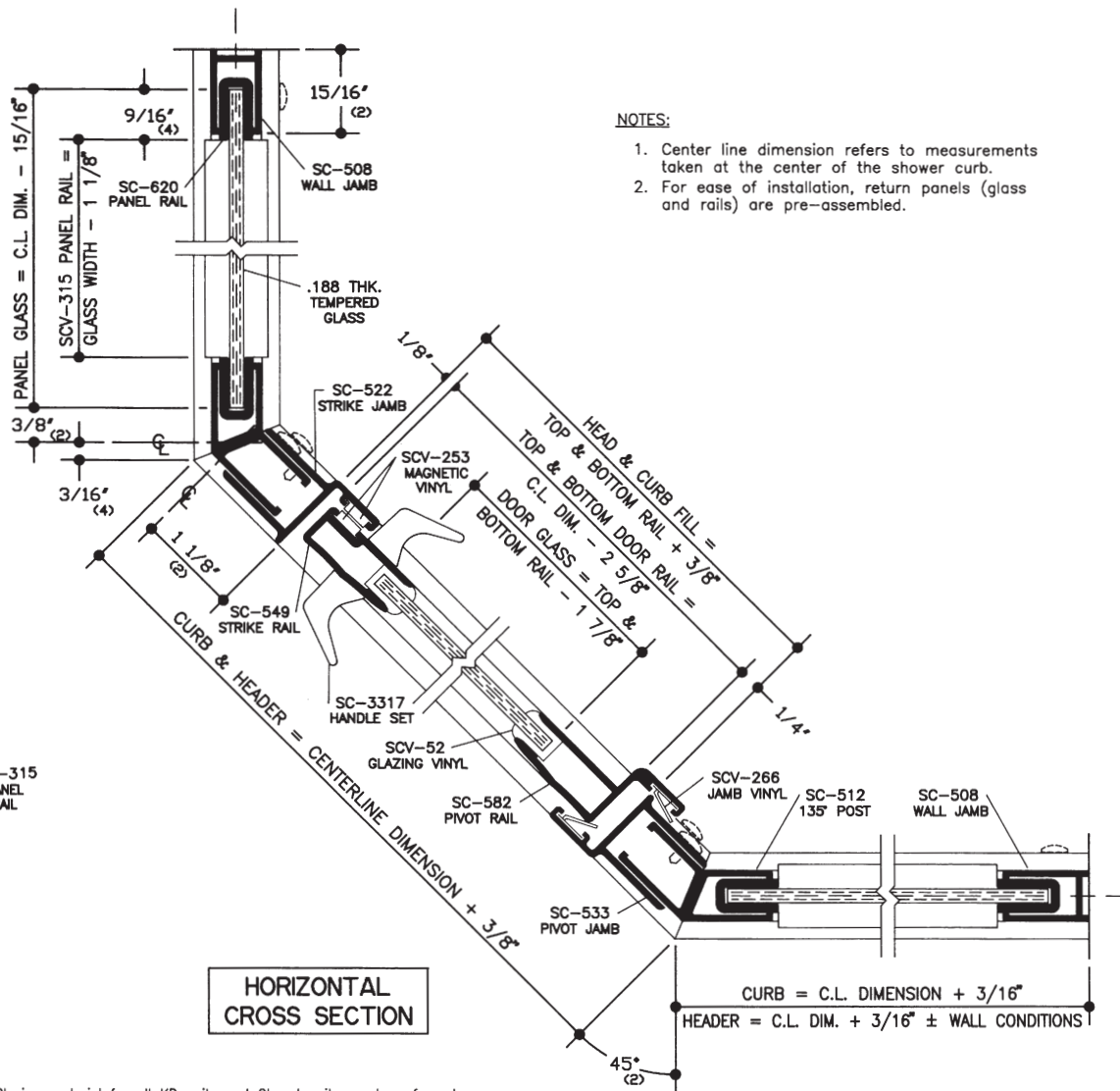


VERTICAL CROSS SECTION



HORIZONTAL CROSS SECTION

NOTES:

1. Center line dimension refers to measurements taken at the center of the shower curb.
2. For ease of installation, return panels (glass and rails) are pre-assembled.

1/2 SIZE DETAIL

NOTE: Glazing material for all KD units and Glazed units must conform to Ansi Z97.1 and CPSC Standard 16 CFC 1201 Category I and II.

SERIES	WIDTH x HEIGHT	DOOR GLASS SIZE	PANEL GLASS SIZE
160 QUICK'NSTALL FRAMED NEO-ANGLE	36" x 32 1/4" x 36" x 68 5/8"	Width As Determined Height = 63 1/2"	Width As Determined Height = 67"



SHOWER ENCLOSURES

7201 Snider Road ■ Mason, Ohio 45040
Phone (800) 45-BASCO